



Relaxin Receptor 2 Polyclonal Antibody

Catalog No	YP-Ab-13667
Isotype	IgG
Reactivity	Human;Mouse;Rat
Applications	WB;IHC
Gene Name	RXFP2
Protein Name	Relaxin receptor 2
Immunogen	The antiserum was produced against synthesized peptide derived from human RXFP2. AA range:113-162
Specificity	Relaxin Receptor 2 Polyclonal Antibody detects endogenous levels of Relaxin Receptor 2 protein.
Formulation	Liquid in PBS containing 50% glycerol, 0.5% BSA and 0.02% sodium azide.
Source	Polyclonal, Rabbit,IgG
Purification	The antibody was affinity-purified from rabbit antiserum by affinity-chromatography using epitope-specific immunogen.
Dilution	WB 1:500-2000;IHC-p 1:50-300
Concentration	1 mg/ml
Purity	≥90%
Storage Stability	-20°C/1 year
Synonyms	RXFP2; GPR106; GREAT; LGR8; Relaxin receptor 2; G-protein coupled receptor 106; G-protein coupled receptor affecting testicular descent; Leucine-rich repeat-containing G-protein coupled receptor 8; Relaxin family peptide receptor 2
Observed Band	86kD
Cell Pathway	Cell membrane; Multi-pass membrane protein.
Tissue Specificity	Expressed mainly in the brain, kidney, muscle, testis, thyroid, uterus, peripheral blood cells and bone marrow.
Function	caution:It is uncertain whether Met-1 or Met-18 is the initiator.,disease:Defects in RXFP2 are a cause of cryptorchidism [MIM:219050]; also known as impaired testicular descent. It is one of the most frequent congenital abnormalities in humans, involving 2-5% of male births. Cryptorchidism is associated with increased risk of infertility and testicular cancer.,function:Receptor for relaxin. The activity of this receptor is mediated by G proteins leading to stimulation of adenylate cyclase and an increase of cAMP. May also be a receptor for Leydig insulin-like peptide (INSL3).,similarity:Belongs to the G-protein coupled receptor 1 family.,similarity:Contains 1 LDL-receptor class A domain.,similarity:Contains 10 LRR (leucine-rich) repeats.,tissue specificity:Expressed mainly in the brain, kidney, muscle, testis, thyroid, uterus, peripheral blood cells and bone marrow.,

**Background**

This gene encodes a member of the GPCR (G protein-coupled, 7-transmembrane receptor) family. Mutations in this gene are associated with cryptorchidism. Alternatively spliced transcript variants encoding different isoforms have been found for this gene.[provided by RefSeq, Oct 2009],

matters needing attention

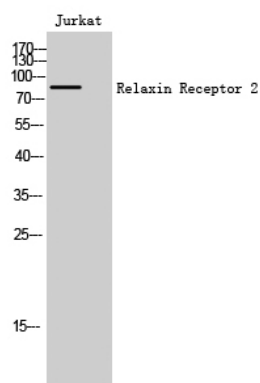
Avoid repeated freezing and thawing!

Usage suggestions

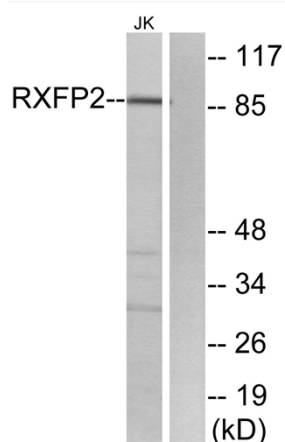
This product can be used in immunological reaction related experiments. For more information, please consult technical personnel.



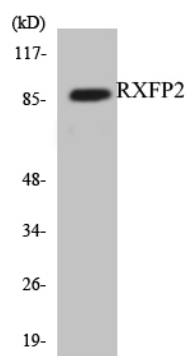
Products Images



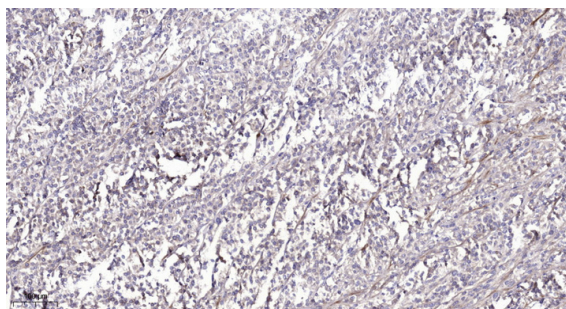
Western Blot analysis of Jurkat cells using Relaxin Receptor 2 Polyclonal Antibody



Western blot analysis of lysates from Jurkat cells, using RXFP2 Antibody. The lane on the right is blocked with the synthesized peptide.



Western blot analysis of the lysates from HUVEC cells using RXFP2 antibody.



Immunohistochemical analysis of paraffin-embedded human Colon cancer. 1, Antibody was diluted at 1:200 (4° overnight). 2, Tris-EDTA, pH 9.0 was used for antigen retrieval. 3, Secondary antibody was diluted at 1:200 (room temperature, 45 min).